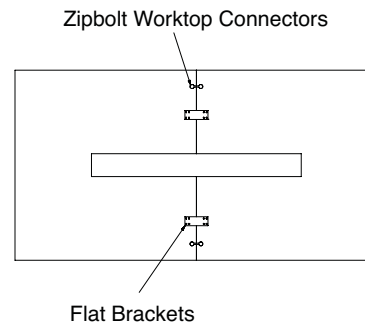
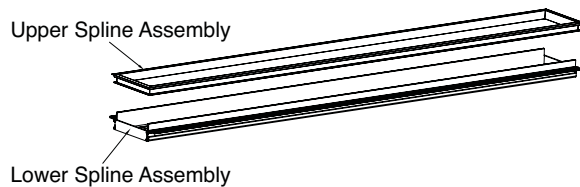


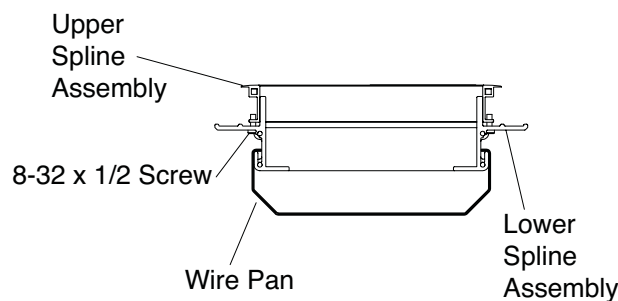
FIGURE A



DETAIL B
TOP ASSEMBLY



DETAIL A
DROP IN SPLINE



DETAIL C
WIRE PAN ATTACHMENT

Read all instructions carefully before beginning. Follow instructions in the correct order to ensure proper installation.

INSTRUCTIONS:

1. Open the box containing the aluminum console frame assembly (Detail A). This assembly consists of two frames fastened together with six (6) screws (one on each corner and two in the center). Remove the screws and carefully separate the upper spline assembly (mitered face trim) from lower spline assembly (heavy aluminum extrusion). **Handle the mitered upper spline frame carefully to avoid damage to mitered corners.**
2. Set the lower spline assembly into the table base (Figure A).
3. Place half tops one at a time into base. **DO NOT** remove the crating strips. **Caution:** Rough handling may damage the top. Three installers is recommended for this step.
4. Align the tops and install two top fastening bolts and two flat plates between the outside of the base and the edge of the table joint (Detail B). **DO NOT** install fasteners before the half tops are in place.
5. Remove the reinforcing crating strips after top has been fastened together.

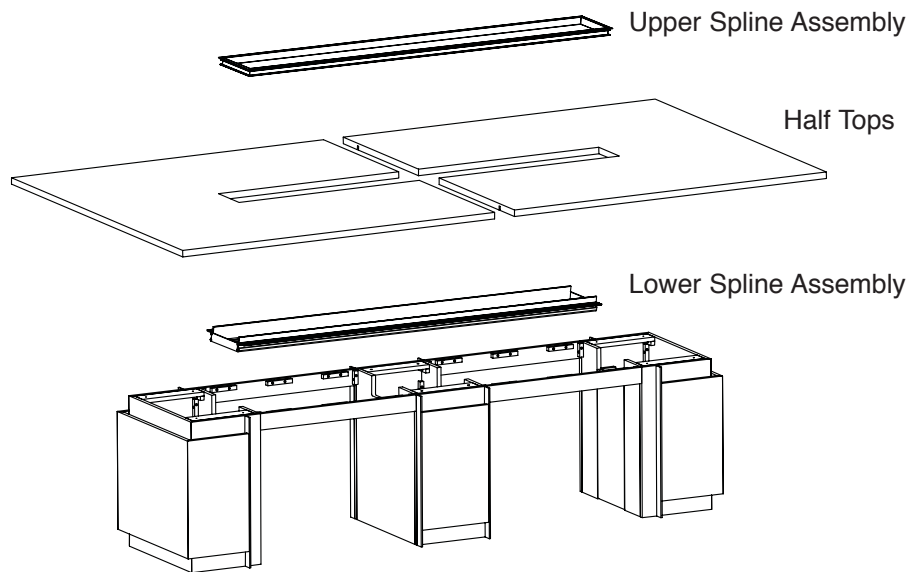
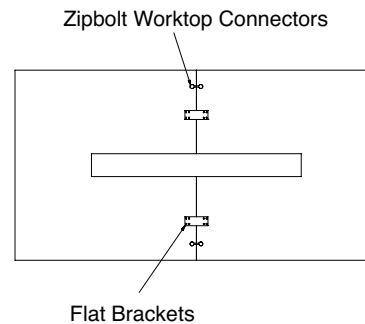
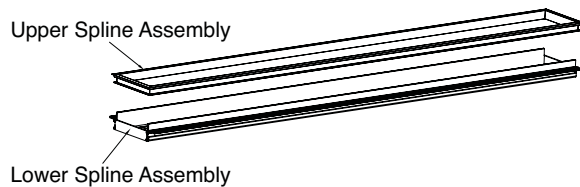


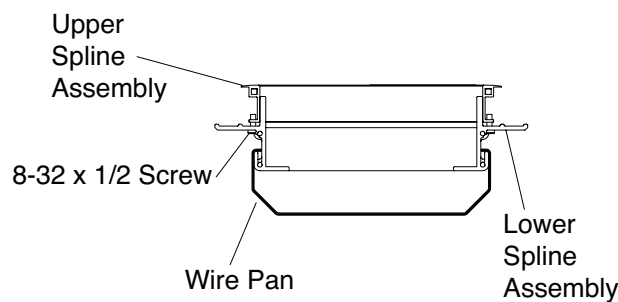
FIGURE A



DETAIL B
TOP ASSEMBLY



DETAIL A
DROP IN SPLINE



DETAIL C
WIRE PAN ATTACHMENT

Read all instructions carefully before beginning. Follow instructions in the correct order to ensure proper installation.

INSTRUCTIONS:

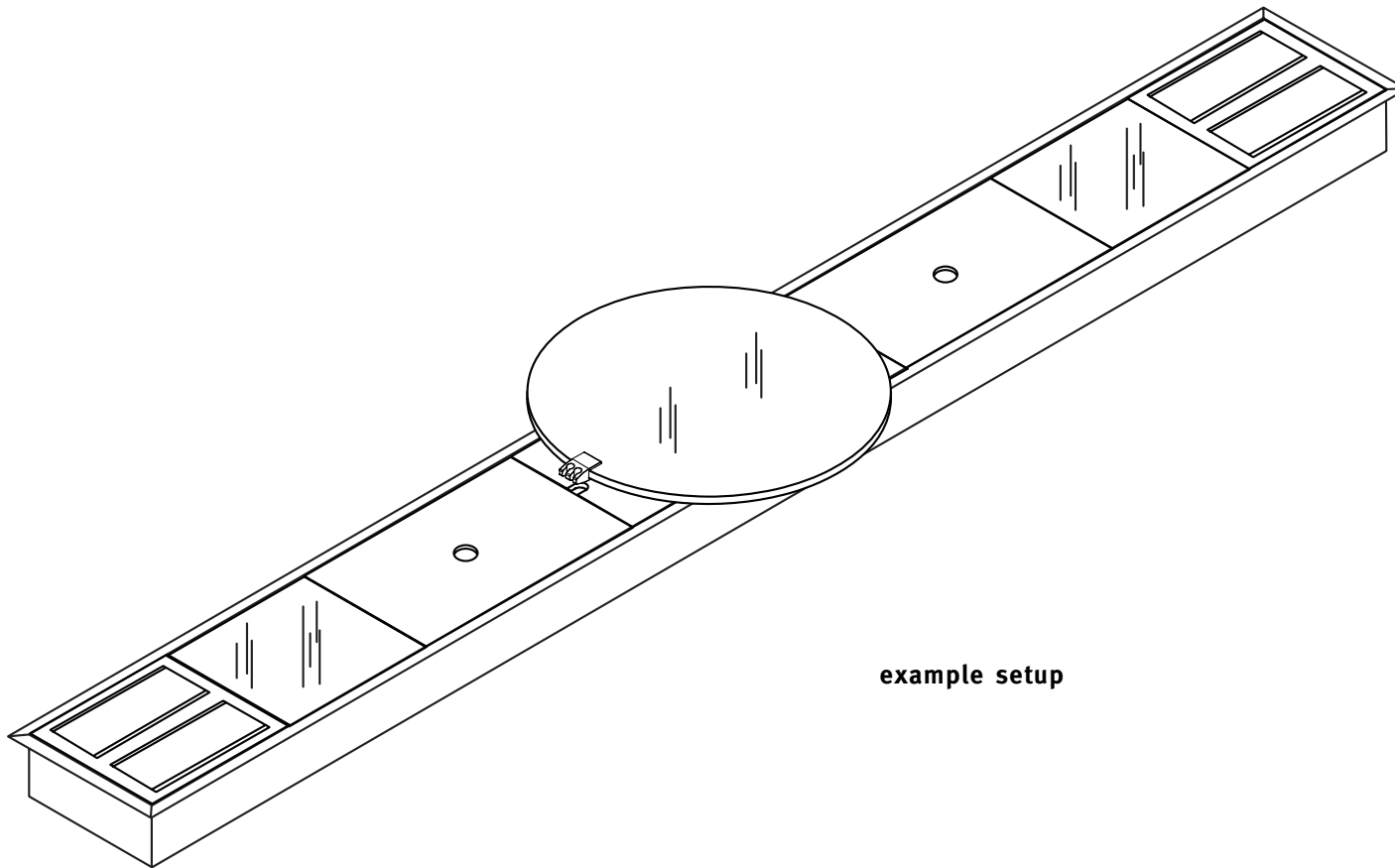
6. From the top side of the table, carefully lay the upper spline assembly in the console opening. Upper and lower frame ends are identified A and B. Match the ends A to A and B to B to ensure proper screw alignment.

7. From beneath the table, raise the lower spline assembly into the console opening. **DO NOT** screw the lower spline assembly to the underneath side of the top.

8. With one installer holding the opposite end in place, line up the predrilled holes in the upper and lower spline assemblies and run two 8-32 x 1/2 self tapping screws (one on each side) into the end of the lower spline assembly (Detail C). Repeat step for the opposite end and center.

9. Install the remaining self tapping screws that hold the lower and upper spline assemblies together.

10. Install the Wire Management pan before installing the modules. Hook the wire management pan on one side of the lower spline frame and push the other side and snap into place. This panel will slide easily along the lower spline frame. See Detail C for hook details.



example setup

Read all instructions carefully before beginning. Follow instructions in the correct order to ensure proper installation.

INSTRUCTIONS:

11. Insert one module in its respective place in the console. Order of modules is determined at time of ordering.
12. Fasten the module with two 10-32 x $\frac{5}{8}$ self tapping screws. If screw holes do not line up, flip module 180 degrees.
13. Install modules one at a time. Repeat steps eleven (11) and twelve (12) for each module.
14. From beneath the table, fasten the lower spline assembly to the top using #8 x $\frac{5}{8}$ head wood screws.
15. Place console module top plate.