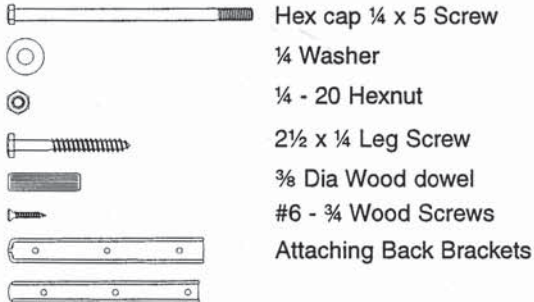


Installation Instructions For BroadCast Tandem Modules

Parts includes:



Recommended Tools:

7/16" Wrench or adjustable pliers
Rubber mallet or hammer

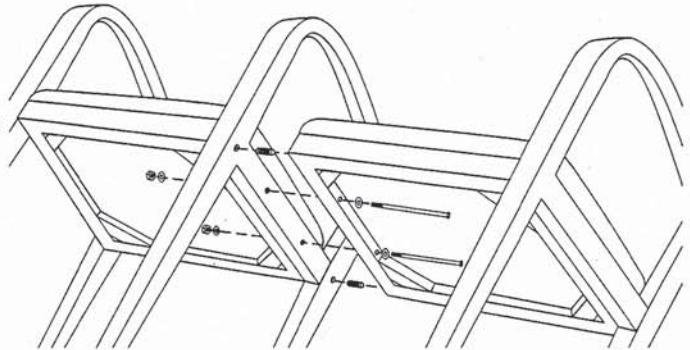
Note: Extra parts may be included...

NOTICE: JOFCO has assembled as much of the tandem modules together as shipping would allow us to do. The following instructions should show how to connect the rest of the tandem seating. We recommend you file this sheet for future reference.

Connecting Two Chairs Together:

Step 1: Place Dowels in the alignment holes and put together seat box frame, middle arm frame and the other seat box frames.

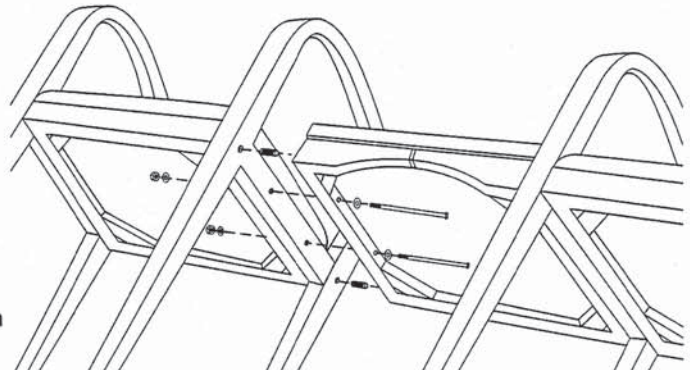
Step 2: Place the bolts, washers combination through the connecting holes of the seat box middle are frame and the other seat box frame. Fasten together with the washers/nuts combination for both holes.



Connecting a Table to a Chair - In Line Table, End Table, or Corner Table

Step 1: Place dowels in the alignment holes and put together seat box frame, middle arm frame and the table frame.

Step 2: Place the bolts and washer combination through the connecting holes of the seat box, middle arm frame and the table frame. Fasten together the washer/nuts combination for both holes.



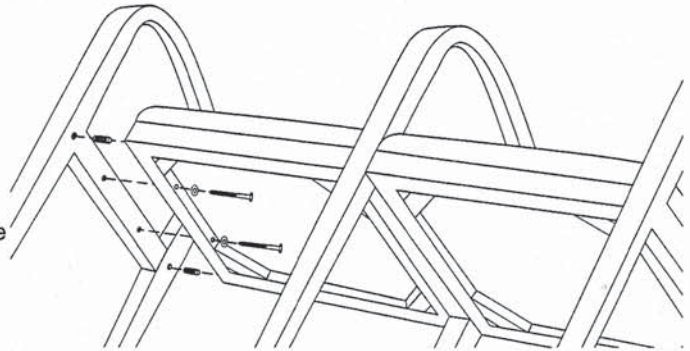
See Back Side for Additional Combinations of Instructions

Installation Instructions For BroadCast Tandem Modules Continued

Connecting a Left or Right Arm End to a Seat Box:

Step 1: Place Dowels in the alignment holes and put together the arm end together with the seat box.

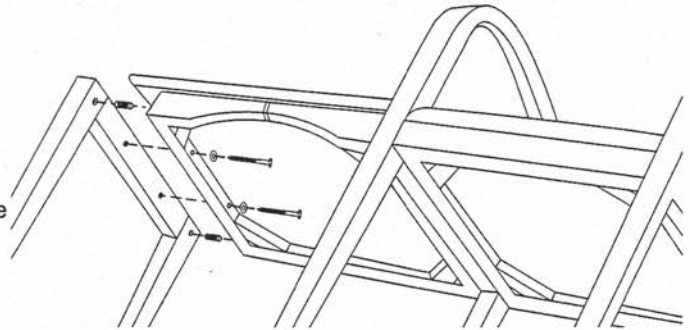
Step 2: Place the lag bolt, washer combination through the connecting holes of seat box and the pilot holes on the arm end. Tighten the lag bolts.



Connecting a Left or Right Arm End to a Seat Box:

Step 1: Place dowels in the alignment holes and put together the arm end together with the seat box.

Step 2: Place the lag bolt, washer combination through the connecting holes of seat box and the pilot holes on the arm end. Tighten the lag bolts.



Connecting Chair Back to Arm Frames:

Step 1: Attach wedge clip to arm with #6 x 3/4 wood screws.

Step 2: Slide chair back inbetween chair arm pushing down to secure in the wedge clamps.

